

Mariak

NEW! SolstiVue NEW!

Mariak

Exterior Zipper Track Shade/Panel System



Enhance your Lifestyle!

When making an outdoor living decision, you want to make sure you are receiving all the conveniences you desire in one product. Mariak's exterior patio shade will provide you with modern and sophisticated home décor, while turning your patio into a centerpiece of the home. In a matter of seconds you and your family will be able to enjoy a relaxing evening doing the finer things in life from the comfort of your own home.

With almost 30 years of manufacturing experience Mariak provides a ridged, solid frame of superior quality. Components are available in several colors and designed to provide energy efficiency while improving the aesthetics and outdoor living experience.

Built Around Your Needs

No matter what your needs are. When you purchase Mariak Exterior Zipper track patio shade, you have the peace of mind knowing we have the necessary components to satisfy them. Our system allows you the homeowner to completely customize each individual unit based on your LIFESTYLE.

From electronics to fabric density and color, to the frame color and remote controls, you will have the ability to adapt each screen to fit your home.

Expand Outdoor Living Space

It's no secret all of us wish to utilize our outdoor living space more often and efficiently. BY choosing a Mariak outdoor shade you are making a lifestyle decision. Our Exterior Zipper track shade will immediately increase the size of your family's living space while keeping the bugs out.



Electronics

The Mariak Motorized screen electronics will put the beauty of your outdoor screen into motion. We offer Both Somfy and Maestrosshield motor systems offering you a perfect marriage of power, precision, and integration. With a multitude of programming options, you have the convenience of total control and the quality assurance, technical support, and innovation at its best. With multiple configurations available,



Contact Us

Mariak Industries

575 W. Manville Street, Rancho Dominguez, CA 90220
Toll Free Phone: 800.562.7425 | Toll Free Fax: 800.459.6999
Phone: 310.661.4400 | Fax: 424.213.4241

Visit us on the web:
www.mariak.com

Just a touch of a button and the SolstiVue Patio Shade lets you change the seasons by insulating your outdoor patio from the heat, cold, wind, and rain.

Perfect for Business and residential outdoor living/dining spaces.

This product is designed to shelter against insects while providing energy-efficient sun-shading, climate control capability, and rain/wind reduction.



Experience the SolstiVue Difference....

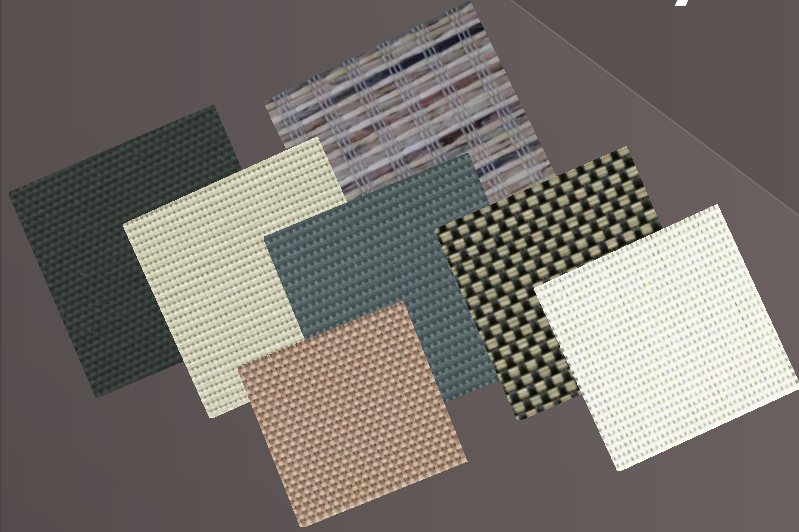


- Image Printed Exterior Shades = Brand Exposure & Advertisement
- Adjustable Side Tracks
- Extensive Fabric & Color Selection
- Certified Dealer
- Up to 20' Width with Rounded Hood
- Lengths up to 12' tall
- 2 Motor brands to choose from
- Manual Crank available
- Rated for up to 40 MPH wind loads



Extensive Exterior Fabric Offering

Fabric Variety



Available Exterior Fabrics:

- Tuff Screen
- Suntex 80 & 90
- Suntex 90 Design
- Suntex 95
- Mermet Natte/Sateen
- Clear Vinyl with Weblon

Engineered for Success

Spline in Feature



- Keeps fabric band perfectly straight
- Fabric won't fall off
- Level to slope of patio
- Prevents sagging in the middle

Adjustable Side Rails

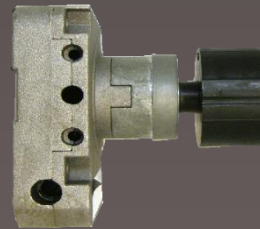


Motorized or Manual

Control options to fit your needs

Manual

Motorized



- 110 volt Hardwire or Plug-In
- Somfy or MaestroShield Motorization available
- 9-1 Manual Gear
- Integrate into Home Automation System

Hood and Chanel Options

Rounded Hood

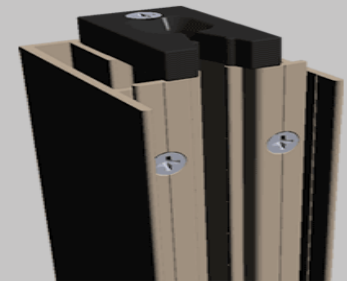
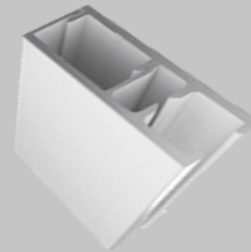


4 Colors to choose from...



Surface or Recessed Mount

*Surface Mount
Side Rail*



*Recessed
Side Rail*

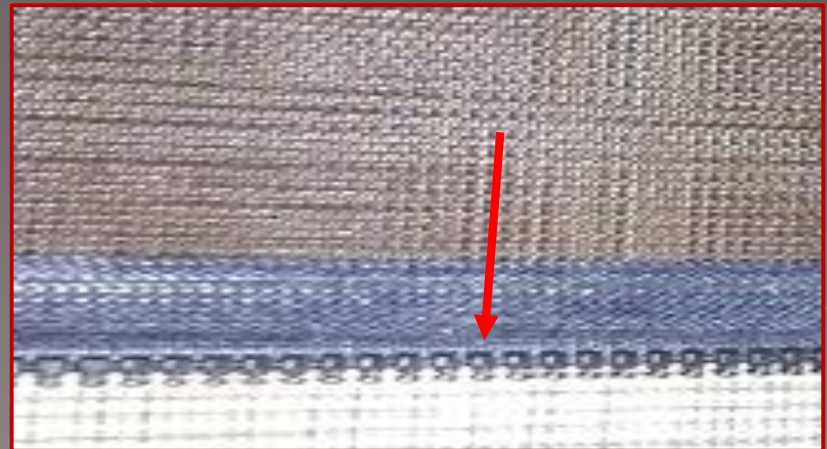
Heavy Duty Welded Zipper

The SolstiVue System uses 2 Heavy Duty Zippers for durability and smooth operation.



Smaller rounded zipper on sides for smooth and quiet operation

Larger Zipper on Bottom for maximum strength along bottom bar



Daytime Privacy



Balcony



Pool Enclosures

Reduces the
Suns Glare



Custom Sized For Your Patio



Tuff Screen View



Enhance your Outdoor living



Enjoy
the
view
without
the
insects

Screen
is
Down...



Screen
is
Up...



Control the Seasons year-round with insulating vinyl panels



Roll Down for Kid Safe play on Patio



Inside Mount Recessed Channel



Outside Mount



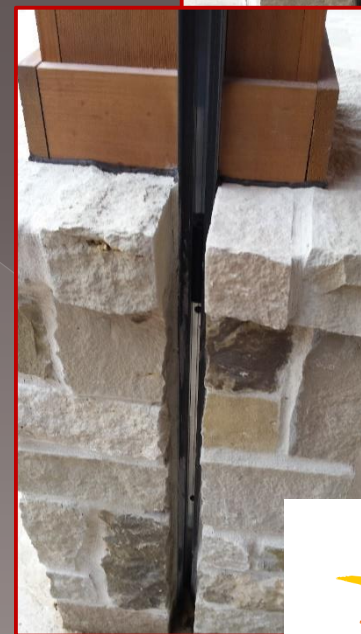
Recessed Application



Side Track
Allows for
various
recessed &
Trapped
Mount
Applications



Header & Tracks set in stone



Color Mix and Match Headerbox and Rails



Easy
Install
Side
Chanel



Brand Exposure & Advertising

Innovative Digital Printing

Image Printed Sun Control Roller Shades

Fastest Lead-Times

Highest Quality

Extensive Fabric Selection

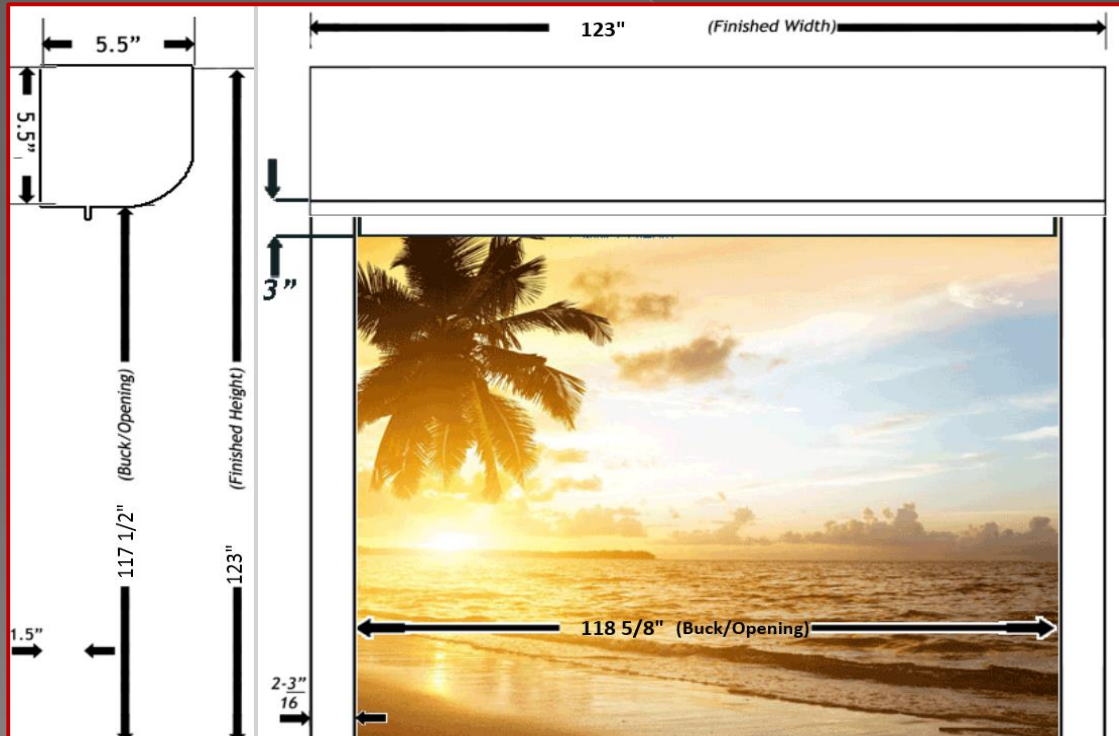
4 Full Image Libraries

- High Definition Printing
- Pantone Matching
- Double Sided Printing
- Landscape Printing
- 5-Year Warranty



General Specifications

- End Cap profile is 5 ½" (14 cm)
- Side Rails are 2" (6.35 cm)



**Recessed
Side Rail**



5.5" Rounded

Warranties



- 10-year warranty on powder coating (1-year in coastal regions within 1 mile of saltwater coastline)
- 5-year full replacement warranty on tubular motors (3-year for Smart Series motors with internal receiver)
- 2-year full replacement warranty on electronics and components
- Up to 10 Year Fabric warranty

Your Logo Here

Your Name &
Company
Information





Mariak

**Mariak Industries, Inc.
575 West Manville Street
Rancho Dominguez, CA 90220
800.562.7425
www.mariak.com**